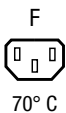


IEC Appliance Connector C14 with Appliance Plug F



Inlet with outlet

KPF Filter Module
(not enclosed)**Description**

- Panel Mount:
Sandwich/rear-side
- 2 Functions:
Inlet Protection class I, Outlet Protection class I
- For PCB mounting
- Alternative: version with line filter [KPF](#); [KPS](#)

Approvals

- VDE License Number: 40008635
- UL License Number: E103791
- CSA License Number: 38456

Characteristics

- Panel mount from rear or "sandwich" between top and bottom/side to side panels
PCB mount with snap-in or screw-on <BREAK/> feet (self tapping screws \varnothing 3 x 8 mm)
- All single elements are already wired
- Insulation cover on the rear-side
- Qualified for use in equipment according IEC/EN 60950

Other versions on request

- Solder terminals
- Quick-connect terminals
- For protection class II

Weblinks

[Approvals](#), [RoHS](#), [CHINA-RoHS](#), [e-Store](#), [SCHURTER-Stock-Check](#), [Distributor-Stock-Check](#)

Technical Data

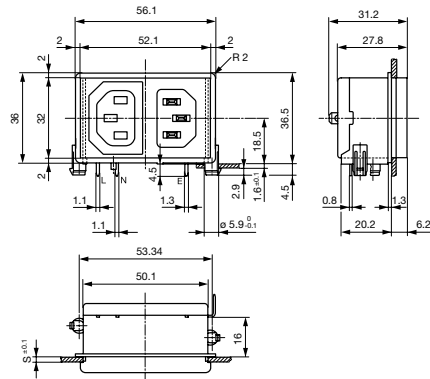
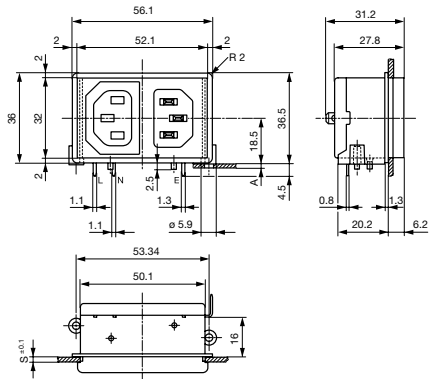
Ratings IEC	10A / 250VAC; 50Hz
Ratings UL/CSA	10A / 125VAC; 60Hz
Dielectric Strength	> 2.3kVAC between L-N > 2.8kVAC between L/N-PE (1 min/50Hz)
Allowable Operation Temp.	-25 °C to 70 °C
Degree of Protection	from front side IP 40 acc. to IEC 60529
Protection Class	Suitable for appliances with protection class I acc. to IEC 61140
Terminal	For PCB mounting Quick connect terminals 4.8 x 0.8 mm Solder terminal on request
Panel Thickness s	Snap-in: 1.5/2/2.5/3 mm
Material: Housing	Thermoplastic, black, UL 94V-0

Appliance-Inlet/-Outlet	C14 acc. to IEC/EN 60320-1 and F acc. to IEC/EN 60320-2-2, UL 498, CSA C22.2 no. 42 (for cold conditions) pin-temperature 70 °C, 10A, Protection class I
-------------------------	--

Dimensions

Screw on PCB mounting

Length |-----| 56.1 mm
Snap-in PCB mounting



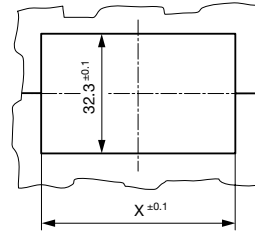
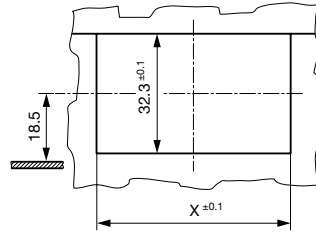
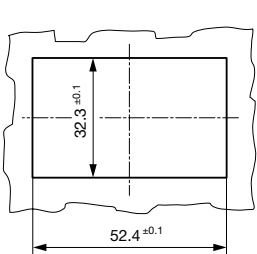
A = for PCB-thickness 1.2/1.6/2.0/2.4 mm
Additional quick connect terminal 4.8 x 0.8 mm

Additional quick connect terminal 4.8 x 0.8 mm
s = panel thickness

Mounting holes for backside mounting

Sandwich mounting holes

Sandwich mounting holes

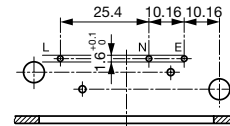
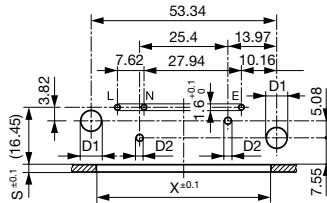


X = 48.4 at S = 1.5 and 2.5
X = 50.4 at S = 2.0 and 3.0

X = 48.4 at S = 1.5 and 2.5
X = 50.4 at S = 2.0 and 3.0

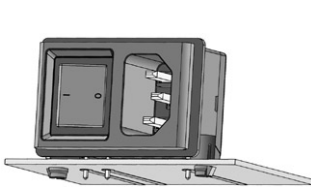
For 2-pole inlet/switch, 2-pole inlet/fuseholder and inlet/outlet

For 1-pole inlet/switch and 1-pole inlet/fuseholder
S and X see mounting holes

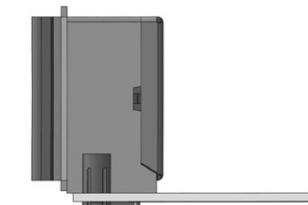


Other dimensions as for 2-poles
d1 = 6 ± 0.05 for (snap-in)
d1 = 3.6 (screw-on)
d2 = 2 ± 0.1 (screw-on)
Dimensions without tolerance:
≤ 15 = ± 0.05; ≥ 15 = ± 0.1

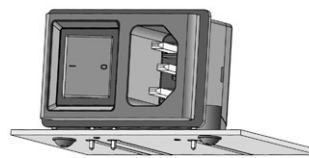
Mounting instructions



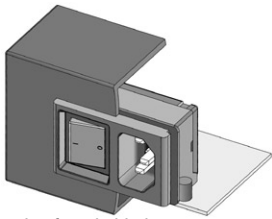
Stable snap feet requires minimal insertion force



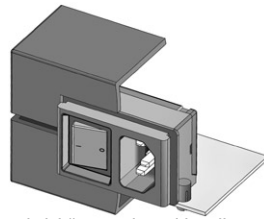
Module must lay flat on the PCB when soldering



Screw-on mount uses self-tapping screws

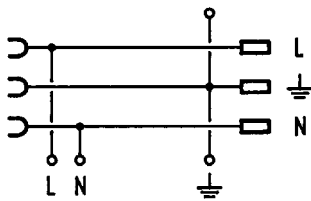


Insertion from behind



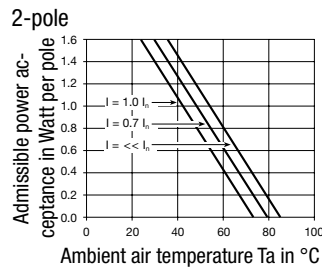
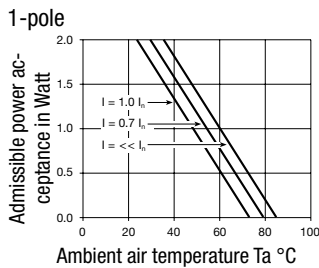
"Sandwich" mounting with split enclosure panels

Diagrams



Inlet with outlet

Derating Curves for Fuseholders



Variants

[Distributor-Stock-Check](#) | [SCHURTER-Stock-Check](#) | [e-Store](#)

Panel mounting	Panel Thickness s [mm]	PCB [mm]	Line Switch	Fuseholder	Appliance outlet	Order Number
Snap-in	2	1.6	-	-	F	KP01.1012.01
Snap-in	3	1.6	-	-	F	KP01.1013.01
Screw-on	2	1.2/1.6/2.0/2.4	-	-	F	KP01.1052.01
Screw-on	3	1.2/1.6/2.0/2.4	-	-	F	KP01.1053.01

Type KP without cover: KP01.XXXX.XX90

Ground Terminal with solder pin: KP01.XXXX.X3XX

Packaging unit 50 Pcs